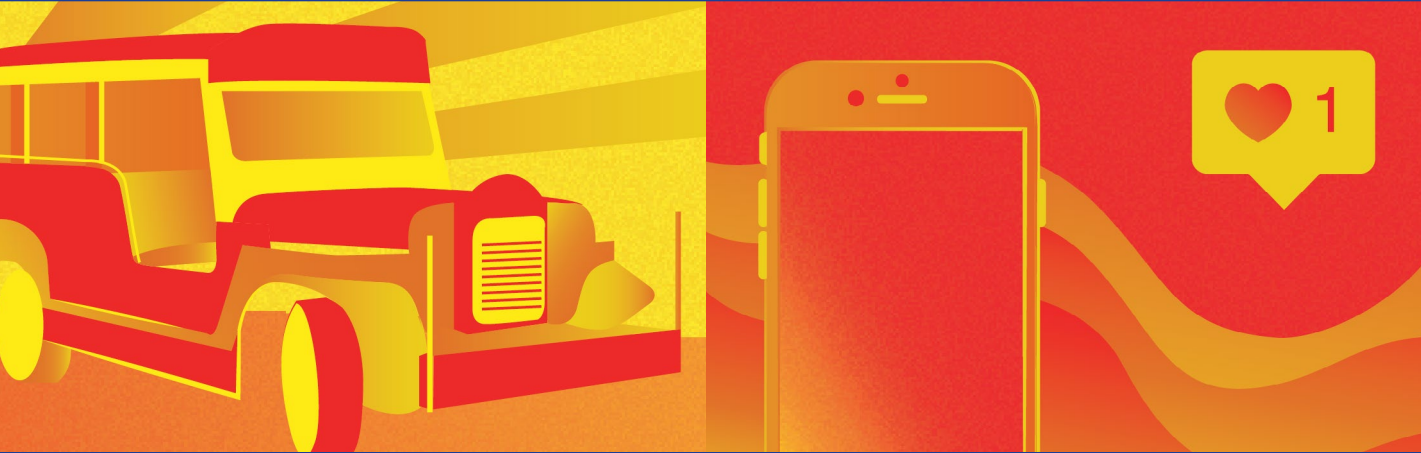




ATENEO DE MANILA UNIVERSITY



Philippine Studies Immersion Program

JUNE 6 - JULY 14, 2018





The Loyola Schools of the Ateneo de Manila University, under the Ateneo Philippine Studies Initiative, is inviting undergraduate students from all fields of study to its summer immersion and study program. Scheduled for the intersession semester months of June and July 2018, the summer immersion program is designed to introduce foreign and local students to the practice of Philippine studies and to the Filipino lifeworld.

Through this four to six-week program, students will be given the opportunity to engage the university's eminent Philippine Studies scholars in classes that will demonstrate the various possibilities of this area of study and the methodologies of its practitioners. These classes will also allow students to immerse themselves in a particular aspect of the Philippine lifeworld in order to provide an experiential ground for their reflections and insights. Students of this program will be exposed both to intellectual and experiential learning opportunities which will serve as an invitation to engage in the work of Philippine Studies.



Table of Contents

Track 1	
The Cultural Laboratory	1
Track 2	
The Philippine Start-Up Culture	2
Track 3	
Filipino Urbanities	3
Track 4	
Ateneo Development Field School	4
Program Fees & Living Expenses	5
Application Requirements	6
Visa and Special Study Permit	8
Important Dates	10
Frequently Asked Questions	11
Contact Details	16



The Cultural Laboratory

The first track is the Cultural Laboratory, a four-week program on the study of sociocultural issues, including the conservation and promotion of the cultural heritage of particular Philippine districts, towns or cities. Here students will investigate different life-worlds and social and cultural landscapes using qualitative research methods and pursue options for disseminating and utilizing research results. Such options include, but not limited to, documentation of local history, places, and practices, and providing technical assistance to cultural enterprises and local government units.

The first week of the cultural laboratory is dedicated to classroom work that will prepare students to creatively and meaningfully realize their field research and immersion.

SA 114

Ethnographic Analysis (3 units)

This course is a study of anthropological praxis to understand and critique the underlying epistemological foundations of ethnographic practice and theorizing. Emphasis is on the practice of ethnography and the analysis of ethnographic data.

SA 159

Globalization, Localities, and Identities (3 units)

This course is a study of consumption and the transformation of identities as important components of the cultural process, examining the intersection between the local and the global.



The Philippine Start-Up Culture

The second track focuses on developing an idea into a business model and product or service prototype. In doing so, the student will learn about the Philippine business start-up culture and Philippine buying behaviors, enterprise etiquette, and business negotiations in order to develop good business relationships. This 6-unit, 4-week course will begin with lectures on the Filipino way of doing business, followed by exposure to the Business Acceleration program of the school, ending with developing a prototype, for a close-up look at Philippine business in action.

MKT 199C

*Special Topics in Marketing: Business
Venture Lab 1 (3 units)*

MKT 199D

*Special Topics in Marketing: Business
Venture Lab 2 (3 units)*

This course is the first of a three consecutive-term program that coaches students in developing their product or service idea into a working model. Students are involved in the essentials of product development and present a prototype of their business proposal at the end of the term.



Filipino Urbanities

This third track will present the student with an interdisciplinary framework for studying the city. From a philosophical, sociological, historical, development, and literary perspective, students will study Philippine cities and their situatedness in the in the global order. They will study the emergence of the Philippine cities, their development, their lifeworld, and the people's responses to this. Aside from classroom work, students will be given periodic tours of the Metro Manila to immerse in its various worlds and urbanities.

PH 192

Philosophy of the City (3 units)

This is a course is a reflection on and a critical engagement with the various possible meanings of the city, in particular the modern Philosophy city. Applying the optics of phenomenology, hermeneutics, and deconstruction, in dialogue with literature, film, political science, sociology, and anthropology, the lecturers will lead the participants in understanding the various rationalities at work within the city, its conceptual and eperimental meaning, its dangers, as well as its promise. It includes an actual engagement in the cultural heritage and life world of the place we call the city.

PH 157.5

Philosophical Topics: Solidarity in Multirational Societies (3 units)

This is a course on the theories of Max Scheler, Jurgen Habermas, John Rawls, and Mahatma Gandhi. The course discusses how they can be used to articulate a philosophy of social solidarity in a world that is multicultural and multirational.



The Ateneo Development Field School

The fourth track is the Development Field School is a 6-unit, 4-week course designed to hone students' skills in applied research, deepen their understanding of a development theme, and allow them to contribute to social development. ADFS typically begins with a week of classroom discussions and exercises on key concepts, frameworks, and skills. This is followed by a week of exploration, where students visit various stakeholder organizations and areas to familiarize themselves with the industry or sector, its dynamics, and the relevant issues. Students are then tasked to focus on the challenges experienced by one particular community or organization and to use research to resolve some of these challenges. The third week is spent conducting intensive research, while the fourth and final week is spent completing the data collection process, producing the research outputs, and presenting these outputs to the partner community or organization.

DS 135.50

Entrepreneurship for Sustainable Development (3 units)

This course explores how social problems can be addressed through financially sustainable earned-income activities. This course presents different social enterprise models and discusses various aspects of the social dimension of social enterprises, including the social dimensions of business operations.

DS 135.15

Special Topics in Development Management: Immersion/Work Camp (3 units)

This course is an extended immersion with a marginalized community. Students experience the dynamics of such communities and reflect on their experience using various lessons learned in class. This course also introduces the practice of social investigation, a preparatory step to community development/organization efforts.



Program Fees & Living Expenses

PARTICULARS	AMOUNT IN PHP	AMOUNT IN USD
1 Tuition	waived	waived
2 Airport Transfers (to and from Ateneo)	2,000	42
3 Visa - Special Study Permit	4,740	99
4 Accommodation in Manila	17,900	373
Oracle Residences and Dorm 317 Katipunan Avenue, Loyola Heights, Quezon City, 1108 Metro Manila		
5 Program Fees		
Ateneo Development Field School <i>Field work in two rural sites (includes transportation, accommodation, food and activity costs)</i>	20,000	417
The Cultural Laboratory <i>Rates may vary depending on the finalized destination (includes local transportation, accommodation, food and activity costs) local airfare will be charged to the student if any.</i>	10,000 to 20,000	208 to 417
The Philippine Start-Up Culture Filipino Urbanities	N/A	N/A

USD 1 = PHP 48.00



Application Requirements

Set I

Initial documents to be submitted before the issuance of the CERTIFICATION OF ELIGIBILITY to STUDY (COES) to the student applicant.

1 Application Form (computer written) and a Letter of Intent addressed to:

Agustin Martin G. Rodriguez, PhD
Professor
Department of Philosophy
Ateneo de Manila University

2 Student Information Sheet (computer written & saved in EXCEL file)

3 Original transcript of records (TOR). If the TOR is not written in English, please have this translated, and certified by the home university.

Photocopy of the biographical page of passport

4

Letter of Nomination/Endorsement from International Office

5 (certifying that the applicant is officially being endorsed as an exchange student)

6 Certificate of English Language Proficiency (for those whose mother-tongue is not English)

Any of the three below:

1. TOEFL (Paper based test) minimum score: 550
2. TOEFL (internet based test) minimum score: 79
3. IELTS minimum score: 6.0

7 Health Certificate in the English language (statement from a medical doctor that the applicant is fit to travel and study abroad)

8 Two (2) pieces of passport size photo (white background, no eyeglasses, contact lenses and headwear)



Application Requirements

Instructions (Set 1)

Complete all 8 initial documents and do the following:

1. Scan documents numbers 1 to 7 and email them to Mr. Jayson Cervantes: jcervantes@ateneo.edu
2. Mail all the hard copies/originals (documents 1 to 8) via EXPRESS MAIL to:

Mr. Jayson Cervantes
Ateneo de Manila University
Office of International Relations
Rm. 304, 3/F Faber Hall, Katipunan Ave.
Loyola Heights, 1108 Quezon City,
PHILIPPINES

Note: Please use EXPRESS MAIL (e.g. FedEx, DHL, UPS, etc.) instead of regular postal mail to avoid delays

Set 2

After evaluation of the initial documents, and approval for admission to the summer program, Ateneo will send the CERTIFICATION OF ELIGIBILITY TO STUDY (COES) to the student by email. The student shall submit additional required documents below to complete the application process:

- 1 Medical / Travel Insurance Certificate**
- 2 Scanned copy of AIRLINE e-ticket**
- 3 Special Study Permit Data Form (computer written)**

Instructions (Set 2)

Complete all 3 additional documents, then scan and email them to:

Mr. Jayson Cervantes:
jcervantes@ateneo.edu

No need to send hard copies by post mail.



Visa and Special Study Permit

Visa and Special Study Permit

In the Philippines, Student Visas (9F) are issued only to international students who are taking full degree undergraduate or graduate academic programs. These students are categorized as degree seeking students. On the other hand, non-degree students, or students who are studying temporarily in the Philippines such as exchange students and cross-registrants, are not issued the regular Student Visas (9F). To study in the Philippines for a period less than one year (1 or 2 semesters) they are required however by the Philippine Bureau of Immigration to secure the TWO documents below:

DOCUMENT	WHEN AND WHERE TO APPLY
Visa Upon Arrival thirty (30) days	<ul style="list-style-type: none">• Upon arrival in the Philippines at the Airport Immigration counters.
Special Study Permit (SSP)	<ul style="list-style-type: none">• Upon arrival in the Philippines• At Ateneo's Office of International Relations,• Rm 304, Faber Hall on the day after arrival

Without the SSP, international students will NOT be allowed to enroll or register for classes in Ateneo de Manila University.



Visa and Special Study Permit

Applying for Special Study Permit

- 1 International students are required to attend to their SSP application a day after arrival in Manila. Students are given only 2-3 days after arrival in order to apply for it.
- 2 International students are requested to visit the Office of International Relations to submit a photocopy of their stamped visa page. After which, they shall fill out the application form for their Special Study Permit (SSP). Students shall pay the required Bureau of Immigration (BI) processing fee to the AdMU cashier.
- 3 International Students should not leave the Philippines and go on travels for the first two consecutive weeks after arrival. This is to ensure completion of the processing of the SSP.
- 4 The following requirements must be submitted to the OIR Visa Officer:
 - The original passport
 - 2 photocopies of the arrival-stamp page in the passport
 - PhP 4,740.00 Processing Fee*
 - 2 pieces 2 inch x 2 inch ID Photos (white background, no eyeglasses)

**fees may change without prior notice*



Important Dates

Program Dates

6 June - 14 July 2018

Nomination Deadline

30 March 2018

Application Submission Deadline

30 April 2018

Payment Deadline

30 April 2018

Expected Arrival Dates to Manila

2-3 June 2018

Expected Departure Dates from Manila

15 - 16 July 2018

Application for Special Study Permit (SSP)

4 June 2018 (between 9:00AM to 4:00PM)

All students are required to report to the Office of International Relations in the morning of June 4th to submit the requirements for SSP.



Frequently Asked Questions

Academic Culture

What is the Philippine educational system like at the university level?

University students in the Philippines are expected to attend classes, and attendance is normally checked. Assessment continues throughout the semester: instructors typically give quizzes, short tests, and other graded requirements, apart from final examinations. Some courses require students to do group work, and students are expected to be available for group meetings and to contribute to the group output.

What is the typical schedule of classes at Ateneo?

Each class in the Philippines has an equivalent credit weight, measured by the frequency of contact hours. At Ateneo, most lecture classes carry a credit weight of 3 Ateneo units. During the regular semesters, this is equivalent to

meeting 3 hours per week, typically taking one of the following formats: one hour per day for classes that meet on Mondays, Wednesdays and Fridays; 90 minutes per day for classes that meet on Tuesdays and Thursdays, or 3 hours per week for classes that meet weekly. During the intersession, 3-unit classes typically meet for 90 minutes everyday from Monday to Friday. Laboratory classes have longer contact hours, and each contact hour per week is equivalent to only one half or one-third of an Ateneo unit.

How many absences are typically allowed at Ateneo?

For 3-unit lecture classes (the most common type of class at Ateneo), the University norm for absences is 9 hours of absences (colloquially called “cuts”). For a typical 3-unit class lecture in the regular semester, this equates to:

- 9 absences for a class that meets 3 times a week,
- 6 absences for a class that meets 2 times a week, or
- 3 absences for a class that meet once a week.

For an intersession class that meets daily, this typically equates to 6 absences. Individual instructors may have additional rules and guidelines pertaining to absences and instances of tardiness. Students who are absent more than the allowable number of times are given a grade of “W” (Withdrawn), that has a quality point of 0 in the Ateneo grading system. Kindly check the Student Handbook for more detail, as well as for information on how absences in other classes (e.g., laboratory classes, classes which are not 3-units) are recorded.



Frequently Asked Questions

Are Ateneo students required to wear uniforms?

Unlike some Philippine universities, Ateneo de Manila students are not required to wear a uniform, except for their university ID card that should be worn on a lanyard while on campus. Ateneo de Manila also has a dress code that is enforced by offices, the university library, and class instructors. The dress code prohibits low-cut/backless/strapless blouses, very low-rise jeans, tops that expose the midriff, short shorts, soiled clothes, lounging shorts/tops. The full implementing guidelines of the dress code are in the LS Student Handbook.

When are final examinations?

The dates for final examinations are marked off in the academic calendar, and students are expected to be available to take an exam on any day within examination week. There are no classes/lectures during examination week. The specific schedules for examinations are announced approximately two

weeks before the exam date. If you find that two of your examinations have a schedule conflict with each other, please inform your professors right away, so that one of your exams can be rescheduled.

Where can I find my class syllabus?

The class syllabus can be downloaded from AISIS (the students' academic portal) on the first day of class.

How can I contact my professor?

The class syllabus contains the professor's contact details. Full-time instructors keep office hours (called "consultation hours") at their home departments; if you need to speak with a part-time instructor, you can arrange to meet with them by personally setting an appointment with them. Many faculty members disseminate announcements to their classes using Facebook groups, as Facebook use is ubiquitous in the Philippines. Using a Globe or Smart SIM card gives you free Facebook access on your smartphone.

What should I call my professor?

The Philippines, like many Asian cultures, puts a premium on addressing seniors politely. Professors can be addressed "Dr. XXX," "Mr. XXX" or "Ms./Mrs./Miss XXX," as the case may be. In conversation, Filipino students typically refer to their professors as "Sir" or "Ma'am."



Frequently Asked Questions

My professor sometimes speaks Filipino in class. What do I do?

Most university-educated Filipinos are bilingual and will sometimes unthinkingly switch from English to Filipino without realizing it. If this happens, feel free to raise your hand and politely ask your professor to translate what they said into English.

Where can I have documents printed?

Printing services are available on campus at the following locations:

- Rizal Library
- Intermatrix at the Loyola Schools Bookstore
- Skew Matrix Kiosks at Kostka Hall (ground floor), the SEC B building (ground floor), and the JGSOM building (2nd floor)

Student Life

What campus organizations can I join?

All inbound exchange students are automatically members of the Ateneo Student Exchange Council (ASEC), and can participate in all their activities. There are dozens of other organizations on campus apart from ASEC. All organizations have a recruitment week in August or early September, and a few of them have a second recruitment period in January or early February.

Do restrooms on campus have toilet paper?

No, they don't. Students are expected to bring their own toilet paper. Some restrooms have tissue vending machines.

Is there halal food on campus?

Unfortunately, the college cafeterias do not yet serve halal food. As of February 2017, there is at least one certified halal restaurant walking distance from campus (Halal Kebab). Many Muslim students also prepare their own meals. For packaged biscuits, chips, and canned goods, you can check for halal certification on the packaging. Certified halal restaurants a little farther away from Katipunan include The Halal Guys (Eastwood, Quezon City), and a few halal restaurants in the Araneta Center complex in Cubao, one LRT ride away from the Katipunan Area.



Frequently Asked Questions

Are alcoholic drinks served on campus?

Alcohol is not sold on campus, and being intoxicated on campus is a disciplinary offense.

What athletic activities can I participate in?

Inbound exchange students are allowed to enroll in one Physical Education class per semester. Apart from this, the Intramurals Athletics Council organizes friendly competitions throughout the school year for futsal, basketball, volleyball, table tennis, and other sports. There is also a membership gym on campus near the high school complex, the Moro Lorenzo Gym, with discounted membership rates for Loyola Schools students.

Medical, Psychological, and Spiritual Wellness

Where can I pray?

The campus has a Catholic chapel on the first floor of Gonzaga hall, a Eucharistic adoration room behind the Chapel, and a few Catholic/Christian prayer rooms in the MVP building. There is also a multi-faith prayer room in MVP building that can be used by students of any faith. The Catholic chapel is open the whole day; students who would like to use one of the prayer rooms may visit the Campus Ministry office to make reservations. Unfortunately, we do not at present have an ablution area beside our multi-faith prayer room.

I need to speak to someone about a private problem. Whom can I speak to?

Licensed guidance counselors can be consulted at the Central Guidance Office located in the Social Sciences Building (2/F). Students with health concerns can approach the LS Health Services on the ground floor of the Social Sciences Building which offers free medical consultations to students; it is staffed with nurses throughout the day and has physicians on call, including a consulting psychiatrist. Students seeking spiritual direction may approach one of the campus ministers at the Campus Ministry Office, 2/F MVP Building. These three offices are open during office hours (8 AM to 5 PM).



Frequently Asked Questions

How do I register with a doctor?

All inbound students are expected to register with our on-campus LS Health Services; you will be asked to fill in a comprehensive medical history form, to help the Health Services know best how to help you in case of a medical emergency. Please rest assured that your medical records will be treated with confidentiality, in accordance with the Philippine Data Privacy Act. If you have medical concerns beyond office hours, some nearby clinics stay open beyond 5 PM: the Healthdev Institute on campus (in the Social Development Complex) is open until 6 PM, and there are also several clinics along Katipunan (across the Ateneo campus), some of which are open until the evening. The nearest hospital is World Citi Hospitals along Aurora Avenue. Please make arrangements with your own health insurance provider regarding payments for medical consultations in clinics or hospitals other than the LS Health Services. Clinics and hospitals in the Philippines also accept cash payments.

Where can I buy medicine?

In the Philippines, doctors or clinics do not dispense medicine to out-patients, with the exception of some dermatological creams. Out-patients must purchase medicine separately at a pharmacy, upon presentation of a prescription. There is a large pharmacy along Katipunan Avenue called Mercury Drug.

Please note: This document is for students' guidance only and is not meant to be construed as a statement of official Ateneo policy. For official university policies, kindly consult the Ateneo Undergraduate and Graduate Student Handbooks.



For inquiries, please contact:

Office of International Relations

Room 304, 3rd Floor, Faber Hall

Ateneo de Manila University Loyola Heights 1108,

Quezon City, Philippines

Trunk line: (+632) 426 6001

local 4041

Mr. Jayson G. Cervantes

Coordinator for Inbound Exchange Students