



# FASS SEP Application Briefing

Date: 18 September 2014



# FASS Helpline

Email: [studyabroadfass@nus.edu.sg](mailto:studyabroadfass@nus.edu.sg)

Contact persons (Admin Matters):

Ms Kimberley Yang

DID: +65 66012353

Ms Jammie Chan

DID: +65 6516 5077

Academic Advice

Dr Lim Boon Tiong, Assistant Dean

# Find out more about us...

FASS International

<http://www.fas.nus.edu.sg/intl/index.html>

Study Abroad @ FASS Blog (Top 5 most visited blog in NUS!)

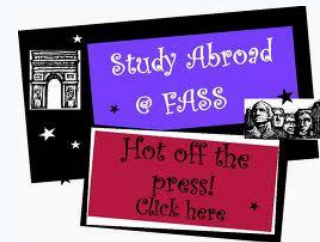
<http://blog.nus.edu.sg/fassinternational/>

Study Abroad FASS @ Facebook

<https://www.facebook.com/studyabroadfassnus>

Study Abroad FASS @ Twitter

<http://twitter.com/#!/StudyAbroadFASS>





1+1  
Sweet  
Deal



# Engaging ASIA'S GIANT Without Fear





# What is this “1+1 Sweet Deal”?

- ♣ To provide opportunities for students to explore both China and other destinations
- ♣ Applicable to Fudan University and Shanghai Jiaotong University (SHJT)
- ♣ U-wide and Faculty-level only
- ♣ Students selected to go to Fudan or SHJT can apply for another overseas SEP in consecutive FASS SEP application round\*

\*Terms and Conditions apply



# What is this “1+1 Sweet Deal”?

- ♣ Schools/Colleges involved with SHJT
  - ♣ School of Humanities
  - ♣ School of International and Public Affairs
  - ♣ School of Media and Design
  - ♣ School of Foreign Languages.

Please note that the Antai School of Economics is not a partner. You may be able to get Economics courses from the School but it is NOT guaranteed.



# What is this “1+1 Sweet Deal”?

- ♣ Schools/Colleges involved with Fudan
  - ♣ College of Foreign Languages and Literature
  - ♣ School of Social Development and Public Policy.

Please note that you may be able to get courses from other Schools but again, this is not guaranteed.



# Terms and conditions

- ♣ Open to all FASS majors; minimum Chinese proficiency required
- English courses in both Fudan University and Shanghai Jiaotong University
- ♣ Second overseas SEP is strictly based on CAP and is not guaranteed; you will be treated as if you have never been on exchange
- ♣ Financial aid/grants only available for 1 of the 2 overseas SEP
- ♣ Some financial awards such as free housing and other perks are restricted to U-wide places and on merit basis only. May not applicable to Faculty-wide places.



# Terms and conditions

- ❖ Selected students who wish to go for second overseas SEP must apply during consecutive application rounds
- ❖ General SEP criteria still apply

Semester to apply for SEP	Intended SEP Semester
September 2014 (Round 1- SEP application)	For semester 1 AY2015-2016- China
February/March 2015(Round 2-SEP application)	For semester 2 AY2015-2016- other destinations

# How to apply?

- ♣ This round for exchange is for exchange in semester 1 or 2 of AY2015/2016 or full year
- Indicate either Fudan University or Shanghai Jiaotong University (SJTU) as 1 of the 5 preferred choices
- State your interest and reasons for applying to Fudan or SJTU in your personal statement



# Fudan University, College of Foreign Languages and Literature

- Fudan University is ranked 25<sup>th</sup> among the top 100 Asian Universities in THE Asia University Ranking 2014
- College of Foreign Languages and Literature -pioneer faculty in Fudan University
- Offers various language and literature courses:
  - Russian language and literature
  - Japanese language and literature
  - German language and literature
  - French language and literature
  - English language and literature and so forth
- Offers translation courses
- Open to all FASS majors



# Fudan University, School of Social Development and Public Policy

- Department of Sociology
- Department of Social Work
- Department of Psychology
- Department of Social Management and Social Policy
- Institute of Population Research
- Open to all FASS majors





# Shanghai Jiao Tong University

- Ranked 47th among the top 100 universities by THE Asia University Ranking 2014
- One of the oldest universities in China but with beautiful campuses and modern facilities
  - *School of Foreign Languages*
  - *School of Humanities*
  - *School of International and Public Affairs*
  - *School of Media and Design*
- Open to all FASS majors



# Shanghai Jiao Tong University - School of Foreign Languages

- Boasts a contingent of high calibre teaching and research faculty working in English, Japanese, German departments and College English Divisions
- Comprises a number of educational, research and professional training units: Natural Language Processing Institute, the International Testing Centre, Language Laboratories Centre, Journal of Contemporary Foreign Languages Studies, Canadian Studies Centre, Centre for Translation Studies and Lexicography



# Shanghai Jiao Tong University - School of Humanities

- Department of Chinese Language and Literature
- Department of History
- Department of Philosophy
- Department of History and Philosophy of Science
- Art Education Center
- National Cultural Quality Education Base for College Students



# Shanghai Jiao Tong University - School of International and Public Affairs

- Founded in June 2003: One of the important strategies for social sciences development at Shanghai Jiao Tong University
- Involves Political Science and Public Administration as the First-class Discipline of China
- Teaching and research at the school include political theory, comparative politics, international relations, public administration, public policy, social welfare, public economics, etc



Shanghai Jiao Tong University  
School of International and Public Affairs



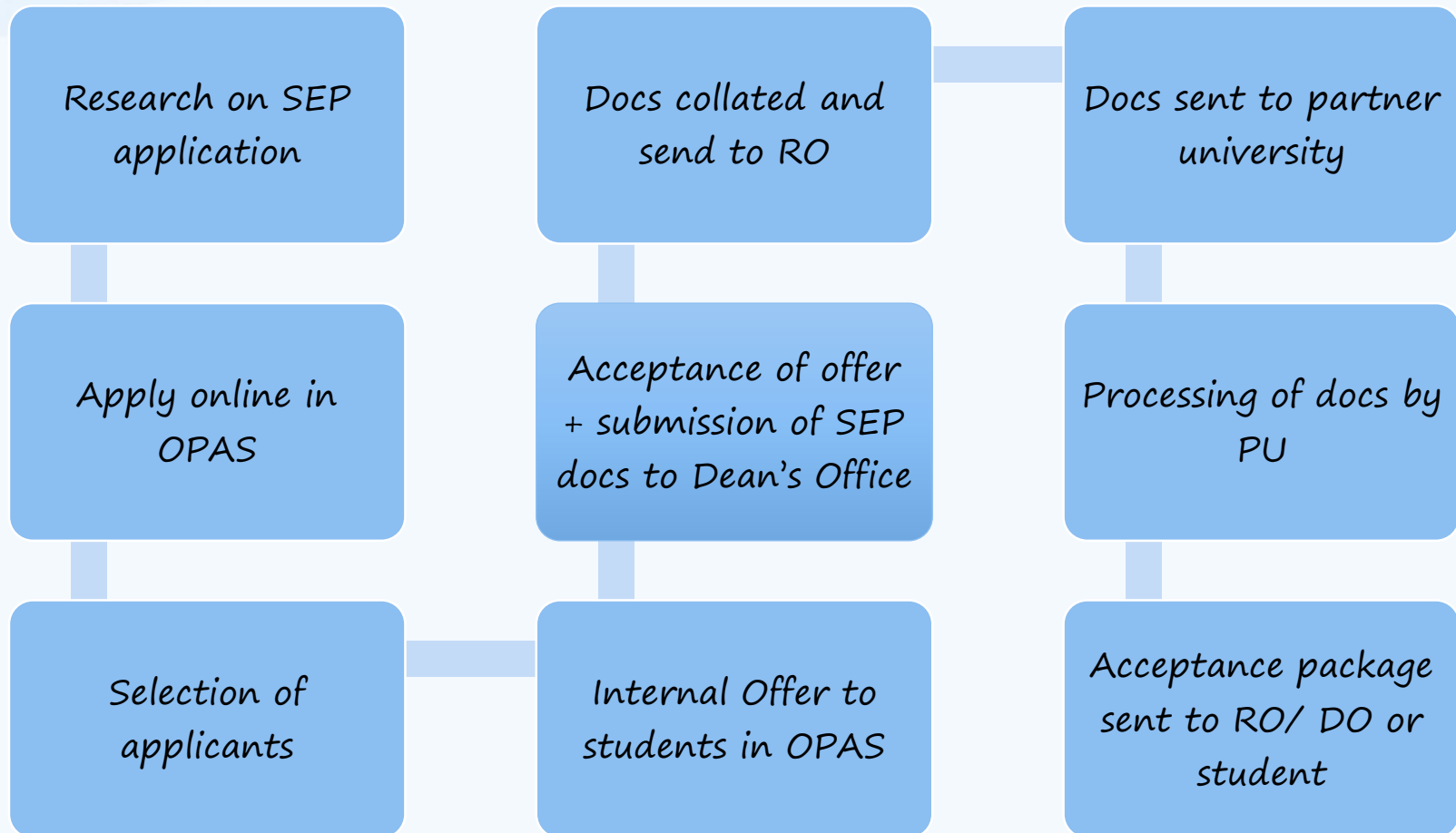


# Shanghai Jiao Tong University - School of Media and Design

- Founded in September 2002
- Features its teaching as interaction of arts and science, interdependence of theory and practice, interconnection of technology, academic research and arts, internationalization, digitization and integration of Industry-University-Research
- Orients itself toward setting up cluster of disciplines where journalism and communication, arts and management interact and complement each other



# SEP Application Workflow



# Key Questions to Answer

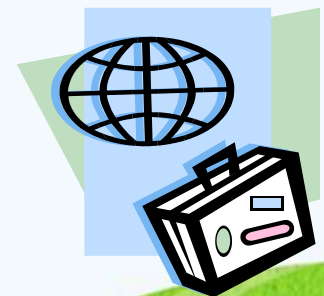
## Research on SEP Application

- Should you go for SEP?
- Are you eligible for SEP?
- Are there any semesters where I cannot go on SEP?
- Can you afford to go on SEP?
- Which University is available?
- Which Universities offer good training for my major?
- How to increase your chances to go on SEP?
- What type of modules can you read on SEP?
- Who should you talk to plan your modules?
- How does equivalency of MC/ credit exchange work?

# Key Questions to Answer

Should you go for SEP?

- Considerations
  - Academic
  - Financial
- Must demonstrate upfront financial ability
  - Sense of adventure





# Key Questions to Answer

Do your own research as to where you want to go.



Read as much as you can about SEP.

IRO website

FASS SEP for Undergraduate

FASS SEP FAQ

# Key Questions to Answer

Are you eligible for SEP?

- CAP: min 3.00 ^
- Preferably no module with a grade lower than C; No D grade in your major

^ This is only a minimum as exchange application is highly competitive, therefore it is likely that average CAP to secure an exchange is higher than 3.00.



# Key Questions to Answer

Are there any semesters where I cannot go on SEP?

- Poly grad: cannot go in 5<sup>th</sup> semester if unable and unwilling to do Honours
- A-level grad: cannot go in 6<sup>th</sup> semester if unable and unwilling to do Honours
- No Honours year SEP allowed

Ability to do Honours- a CAP of 3.5 and above

- Non-negotiable based on current CAP at the point of application

# Key Questions to Answer

Rules for minor/major/ double degree business students

*Minor in Management:*

[http://bba.nus.edu/majorminor\\_minor\\_mgmt.html](http://bba.nus.edu/majorminor_minor_mgmt.html)

*Major in Management:*

[http://bba.nus.edu/majorminor\\_major\\_mgmt.html](http://bba.nus.edu/majorminor_major_mgmt.html)

Double degree students: There is no maximum number of credits transferrable for business modules. Having said that, please adhere to the maximum number of credits you can transfer back from overseas:

[http://www.fas.nus.edu.sg/intl/special\\_prog/maximum\\_credit\\_transfer\\_sep.html](http://www.fas.nus.edu.sg/intl/special_prog/maximum_credit_transfer_sep.html)

NOTE: NUS Business School does not issue dummy codes. If you wish to fulfill your business graduation requirements, it must be mapped and approved to specific NUS business module codes.

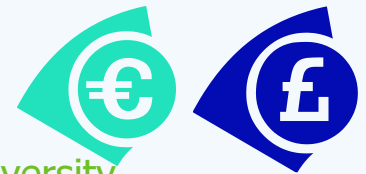


# Key Questions to Answer

Can you afford to go on SEP?

## Cost of living per semester (6 months basis)

- Zhejiang University S\$4586
- Fudan University S\$4950
- Chinese University of Hong Kong S\$\$14628
- Lund University S\$\$7590
- University of Helsinki - S\$\$9539
- University of North Carolina at Chapel Hill S\$7815
- King's College London S\$\$10587
- Sciences Po S\$\$10236
- University of Melbourne S\$\$17064
- University of Washington at Seattle S\$12755



Data from [IRO website on partner university](#)

# Key Questions to Answer

## ☐ Financial Aid from IRO

NASA (up to maximum of \$2500), quantum depends on needs basis and merit basis

## ☐ Financial Loans

## ☐ Other External Funding Organisations



# Key Questions to Answer

## Which University has available places?

There are some restrictions stipulated:  
semester available to NUS student, full year required, language proficiency, must have completed at least 4 semesters of study etc.

- This information will be available in OPAS as well.

# Key Questions to Answer

Which Universities offer good training for my major?

- Please do your own research
- SEP coordinators
- Your department undergraduate academic advisor

## Admin Questions?

- For University-level partners, please write to IRO
- For Faculty-level partners, please refer to the Departments or FASS



# Key Questions to Answer

How to increase your chances to go on SEP?

Consider non-traditional locations such as China, European countries outside of the UK.

Be proficient in the language of the country where your university is located. How to do that?

Enrolled in the IRO French and German Language Preparation Programme (LPP)

Note: Students who wish to go to non-English speaking countries should have the relevant language proficiency.





# Key Questions to Answer

What type of modules can you read on SEP?

- Major modules\*
- UEs
- Breadths
- GEMS
- Modules towards your minor



# Key Questions to Answer

Criteria for credit recognition:

- a. Must pass module and credits earned from PU
- b. Must be of certain academic rigor (credits given for orientation-related events NOT included)
- c. Must be approved by the SEP coordinator from the relevant discipline
- d. Minor only 8 MC overseas credit



# Key Questions to Answer

## Applying online in OPAS

- How does Overseas Programme Application System (OPAS) work?
- Is there a list of available spaces in partner universities?
- What are the sort of information I need to provide in OPAS?

# Application and Selection Process

How does Overseas Programme Application System (OPAS) work?

<https://myaces.nus.edu.sg/VOPSEP/Login>

Timeline: 20 September to 10 October 2014 (1159)

Period for Exchange:

- Semester 1 AY2015/2016 or
- Semester 2, AY2015/2016 or
- Or Full year AY2015/2016

Final/ graduating semester exchange not allowed.

Cannot go on exchange in Honours year !!!!



# Application and Selection Process

- List of available spaces in partner universities (accurate as at 18 September 2014)
- May have several rounds of internal offer starting from Mid November to end December 2014





# Application and Selection Process

## Item needed in OPAS

1. Need to state family income, saving amount, number of people in your household, how you intend to fund your exchange
2. Need a proper SEP statement
3. Need to indicate language proficiency
4. Need a complete study plan
5. Need to put 'NA' if the section is not applicable to you

**Incomplete application will NOT be considered**

# Key Questions to Answer

## Selection of Applicants

- What is the selection process like and how long does it take?
- How does the internal offer in OPAS work and what is the collection of documents process and what documents will I need?
- What happens after I submit the documents to the Dean's Office?
- How long does it take for the PU to respond? What happens at the PU processing?
- Is there an appeal system or waiting list?
- If after acceptance, I need to withdraw from SEP, what should I do?

# Application and Selection Process

- Departments' first selection
- Faculty's second selection
- Email to students with internal offer
- This process can take the greater part of one month
- Why so long?
  - There are over 800 to 900 applications a year and they all have to be looked at.
  - Because the Departments and Faculty need time for their recommendations
  - Because the Faculty try to give alternatives when all 5 options are exhausted.



# Application and Selection Process

## Internal Offer Email

- Documents to complete the SEP application after acceptance of Internal Offer
- Please adhere to the deadline so that processing is not delayed
- Items required to complete your SEP application

# Application and Selection Process

- Acceptance of internal offer (you have 7 to 10 days to decide)
- YOU MUST GO INTO OPAS TO ACCEPT OR REJECT THE OFFER. PLEASE DO NOT DO NOTHING.
- Caution: Think long and hard before you accept the internal offer; admin fee of \$300 applies if you withdraw after internal offer acceptance.
  - Lack of modules and inability to map modules
  - Lack of financial ability
  - Family/ CCA commitment





# Application and Selection Process

## Internal Offer Email

- Some of your common questions
  - I tried to search on the PU website but cannot find the application form, what should I do?
  - If PU asked for 2 recommendation letters on their application form, do I need to provide 4 letters?
  - How should I go about getting the bank letter? Is it the same as bank statement? Do I have to pay? Why do I need to provide this letter?

# Application and Selection Process

## Internal Offer Email

- Some of your common questions
  - If my sponsoring organisation is already sponsoring me, do I still need the bank letter?
  - What if I do not have sufficient funds at this point to produce the bank letter?
  - What is a certification of enrolment?
  - How shall I get my transcript?
  - What does a copy of passport page mean?

# Application and Selection Process

## Internal Offer Email

- Some of your common questions
  - The partner university's application form required signature from my exchange coordinator, what should I do?
  - The partner university ask for a study plan/ course selection/ registration form. Do I need to get module mapping from the SEP coordinators at this point ?
  - If the PU asked me to send the documents to them directly on their website, should I do so?

# Application and Selection Process

## Internal Offer Email

- Some of your common questions
  - Do I need to produce proficiency of English for the partner university?
  - If the partner university requires a medical report or X-ray, do I have to include this in my application materials?

# Application and Selection Process

- Faculty then send your SEP documents to RO
- RO process and forward to PU



# Application and Selection Process

## Appeals for Non-Successful Applications

- The odds of reversal is not high.
- Wait-listing may be possible but it depends on the timeline given by RO/PUs for the submission of SEP documents.

# Application and Selection Process

## Withdrawal Process

- Write formally to Assistant Dean c/o Study Abroad Query
- Please do not assume that withdrawal is automatic because you did not submit the relevant SEP documents
- Come start of semester, you will not be able to participate in CORS to register module as your status is “ On Student Exchange”



# Key Questions to Answer

How does equivalency of MC/ credit exchange work?

## Example

For Peking University, 15 credits= 20 MC so therefore if you read 17 credits= 23 MCs.

You can read more credits if you want, you get to bring back more MCs.

If you read less, you will also bring back less MC - no ifs and buts about this rule. If you end up with 1 MC less and you need to graduate, then you will need to do special term or another semester for 1 MC to graduate.

# Reality Check Here

- Limited spaces for US, Canada, UK, Australia, New Zealand, Japan and Hong Kong
- CAP still rules
- A lot of students disappointed
- Choose wisely



# List of Faculty Partner Universities

## Chinese Universities

- Fudan University
- Shanghai Jiaotong University

## US Universities

- University of Washington, the Henry M. Jackson School of International Studies
- University of Kansas

## European Universities

- Sciences Po Bordeaux
- Georg-August University of Göttingen
- Leiden University College The Hague
- Leiden University Faculty of Humanities



# List of Faculty Partner Universities

## *SEA Universities*

- *Khon Kaen University*

# University of Kansas, Department of Psychology

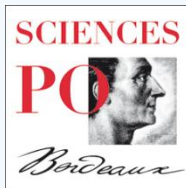


- The University of Kansas is a public research university and the largest university in the State of Kansas
- Currently open to only Psychology majors



# Sciences Po Bordeaux

- *One of nine Institutes of Political Studies in France*
- *Suitable for Political Science majors*
- *Offers English courses in Political Science and International Relations both at undergraduate and graduate level*
- *Students with good French proficiency may attend courses taught in French*
- *Requires students to follow French language courses (beginners to advanced level)*



# Georg-August University of Göttingen

- Distinguished by the rich diversity of its subject spectrum particularly in the humanities
- Faculty of Social Sciences – [List of courses taught in English](#)
- Faculty of Economics Science – [List of courses taught in English 1](#)
- [List of courses taught in English 2](#)
- Faculty of Humanities
- Open to all FASS majors with some German proficiency

GEORG-AUGUST-UNIVERSITÄT  
GÖTTINGEN



# Leiden University College The Hague

- *International honours college of Leiden University situated in the world's capital of peace and justice*
- *Provides unique combination of world-class scholarly depth, drawn from the oldest university in the Netherlands, with a cutting-edge and globally conscious curriculum that capitalises on its location in the vibrant, international atmosphere of The Hague*
- *Offers courses in Liberal Arts & Sciences that focus on issues of Peace, Justice and Sustainability*
- *Open to all FASS majors*





# Leiden University, Faculty of Humanities



- Located in the city of Leiden, is the oldest university in the Netherlands
- Humanities Faculty- 49th place for Arts & Humanities (QS World University Ranking)
- Especially in areas of Linguistics and History & Archaeology
- The Times Higher Education World University Rankings consistently rank Leiden University as the best university in Continental Europe for Arts and Humanities



- The first higher educational institution in the Northeastern Region of Thailand
- Faculty of Humanities and Social Sciences
- Open to all FASS majors
- Southeast Asian Studies majors must completed at least 2 levels of Thai language modules before embarking on the exchange
- For non-SEA majors: Documentation of Thai language proficiency before you will be offered an exchange
- Students can only go in Sem 1 of any given AY



Questions?

