

*I want
to go
for SEP!*



UNIVERSITY OF
TORONTO

*I want to
do a
Geography
minor!*

University of Toronto Joint Minor Programme Briefing

Date: 17 September 2012

Venue: AS7 Seminar Room B

Time: 6.30pm to 8.00 pm



NUS

National University
of Singapore

Programme Overview

Introductory talk

A/P Yeung Kwok Yung, Godfrey (Dept of Geography)

UoT Joint Minor Programme Coordinator

6.30pm – 6.50pm

UoT Joint Minor and SEP Application Procedure

Ms Shirley Koh

Senior Manager, FASS Dean's Office

6.50pm – 7.20pm

Q&A Session

7.20pm – 7.30pm

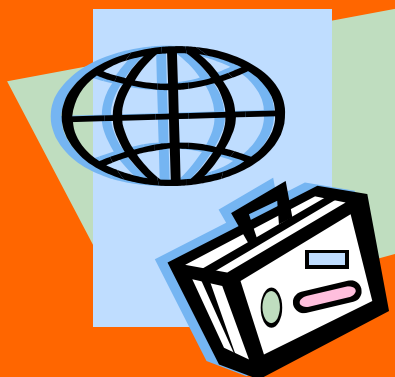
Refreshment Time

7.30pm – 8.00pm

Find out more on the UoT Joint Minor Programme...

http://www.fas.nus.edu.sg/intl/JointDegree/jmp_toronto.html

http://www.fas.nus.edu.sg/geog/programmes/UoT_Joint_Minor.htm



FASS SEP Application Briefing

Date: 17 September 2012



FASS Helpline

Email: studyabroadfass@nus.edu.sg

Contact persons (Admin Matters):

Ms Letitia Thng

DID: +65 6601 2353

Ms Jammie Chan

DID: +65 6516 5077

Academic Advice

Dr Lim Boon Tiong, Assistant Dean

How to apply?

- ❖ Must email to FASS study abroad to indicate interest
- ❖ Apply during Round 1 FASS SEP application via OPAS in late Sept 2012
- ❖ This round for exchange in both semester 1 and 2 of AY2013/2014
- Indicate UoT as first partner university choice
- Indicate your interest and reasons for applying to this joint minor in your personal statement

Find out more about us...

FASS International

<http://www.fas.nus.edu.sg/intl/>

Study Abroad @ FASS Blog (Top 5 most visited blog in NUS!)

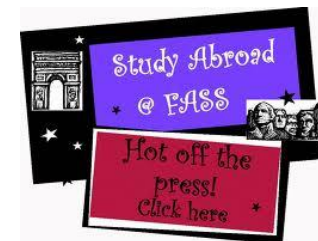
<http://blog.nus.edu.sg/fassinternational/>

Study Abroad FASS @ Facebook

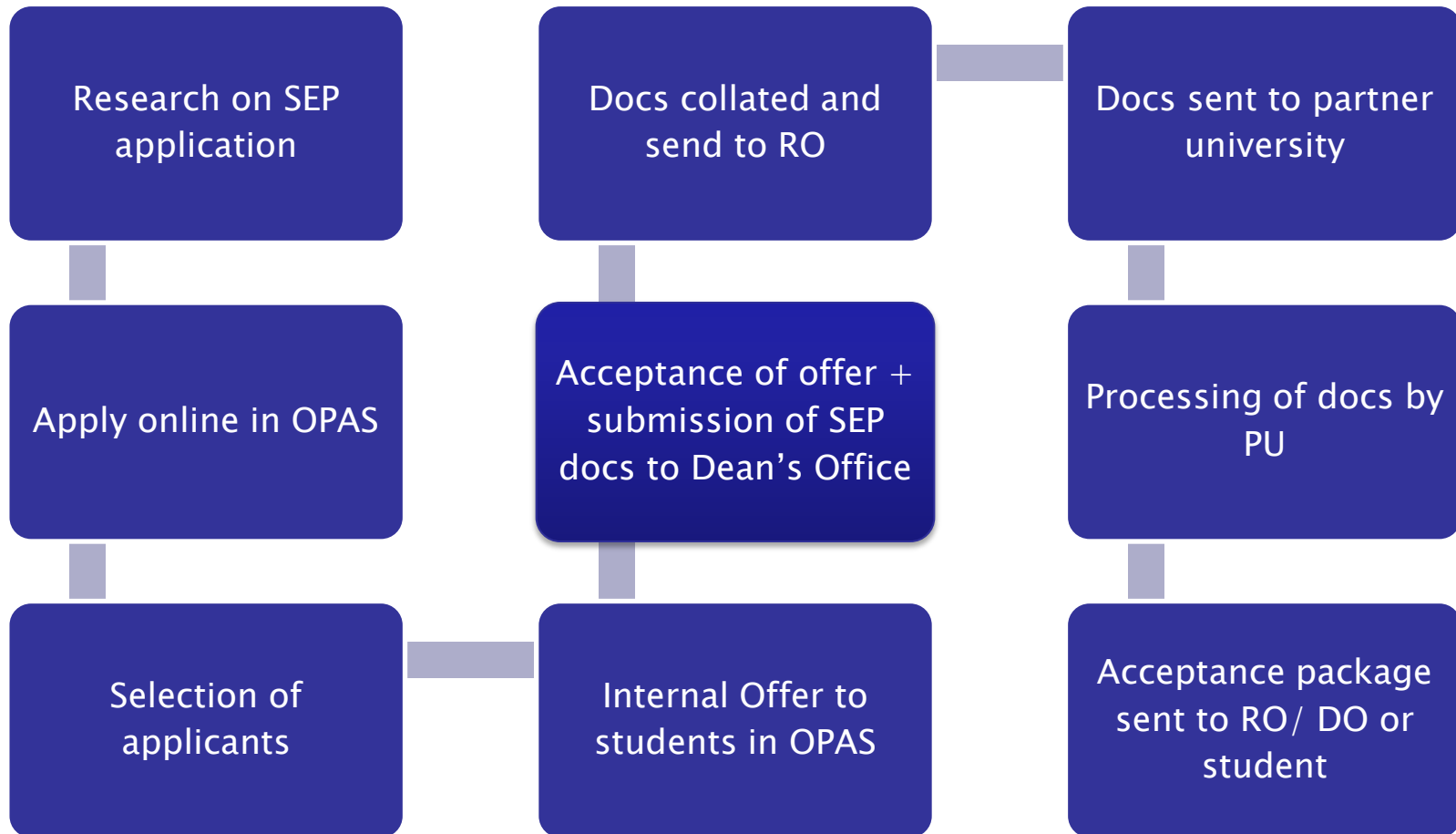
<https://www.facebook.com/studyabroadfassnus>

Study Abroad FASS @ Twitter

<http://twitter.com/#!/StudyAbroadFASS>



SEP Application Workflow



Special Programmes

Yale Visiting International Student Program (Y-VISP) 2013

- ✓ Only full-year exchange in AY2013/14
- ✓ Year 3 at Yale; therefore open to year 2 students only
- ✓ Will live on one of Yale residential colleges
- ✓ Interview process
- ✓ Shortlisted students- no guarantee of selection, final call rests with Yale
- ✓ Once nominated, will not get another chance of an offer for this round 1

Special Programmes

Yale Visiting International Student Program (Y-VISP) 2013

- ✓ Need to have money for airfare
- ✓ Must pay NUS tuition fees and other misc costs
- ✓ Application details will be attached with the email notification for SEP application
- ✓ Lots of documents to submit- incomplete will not be considered

Special Programmes

Yale Visiting International Student Program (Y-VISP) 2013

- ✓ Good academic performance – CAP of 4.0 and above
- ✓ Well-rounded, with a wide range of interests, skills, and/ or talents
- ✓ Active engagement beyond the classroom, to take advantage of Yale’s vibrant extracurricular community

Special Programmes

Yale Visiting International Student Program (Y-VISP) 2013

- ✓ Deep commitment to and genuine appreciation for his/ her extracurricular pursuits
- ✓ Great desire and ability to stretch the limits of his/ her talents
- ✓ Outstanding motivation to be a leader in what he/ she chooses to pursue, for the greater good

Key Questions to Answer

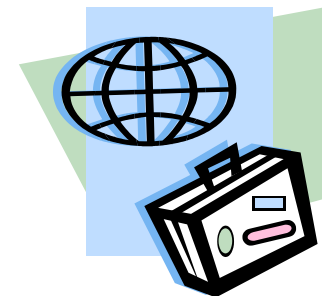
Research on SEP Application

- Should you go for SEP?
- Are you eligible for SEP?
- Are there any semesters where I cannot go on SEP?
- Can you afford to go on SEP?
- Which University is available?
- Which Universities offer good training for my major?
- How to increase your chances to go on SEP?
- What type of modules can you read on SEP?
- Who should you talk to plan your modules?
- How does equivalency of MC/ credit exchange work?

Key Questions to Answer

Should you go for SEP?

- **Considerations**
 - Academic
 - Financial
- **Must demonstrate upfront financial ability**
 - Sense of adventure





Key Questions to Answer

Do your own research as to where you want to go.

Read as much as you can about SEP.

[IRO website](#)

[FASS SEP for Undergraduate](#)

[FASS SEP FAQ](#)

Key Questions to Answer

Are you eligible for SEP?

- **CAP: min 3.00 ^**
- **Preferably no module with a grade lower than C; No D grade in your major**

^ This is only a minimum as exchange application is highly competitive, therefore it is likely that average CAP to secure an exchange is higher than 3.00.



Key Questions to Answer

Are there any semesters where I cannot go on SEP?

- **Poly grad: cannot go in 5th semester if unable and unwilling to do Honours**
- **A-level grad: cannot go in 6th semester if unable and unwilling to do Honours**
- **No Honours year SEP allowed**

Ability to do Honours- a CAP of 3.5 and above

- **Non-negotiable based on current CAP at the point of application**

Key Questions to Answer

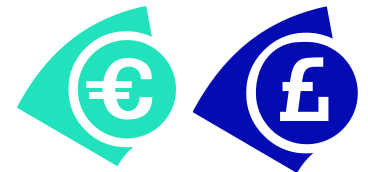
- Double Degree/ major in Business– please note that Biz will not be mapping to direct NUS module codes. Therefore you cannot read Biz modules toward your 2nd major or 2nd degree.

Key Questions to Answer

Can you afford to go on SEP?

Cost of living per semester (6 months basis)

- UNCCH S\$\$9,396
- Monash University S\$\$17,652
- Chinese University of Hong Kong S\$\$6,608
- Sciences Po S\$\$8,701
- University College London S\$\$11,973
- Fudan University S\$5,248
- Warsaw School of Economics S\$\$3,000
- University of Helsinki - S\$\$10,487



Key Questions to Answer

Financial Aid from IRO

NASA (up to maximum of \$2500), quantum depends on needs basis and merit basis

Faculty SEP Grant

Available only if student cannot get NASA

Financial Loans

Other External Funding Organisations



Key Questions to Answer

Which University is available?

- There are some restrictions stipulated: semester available to NUS student, full year required, language proficiency, must have completed at least 4 semesters of study etc.
- This information will be available in OPAS as well.

Key Questions to Answer

Which Universities offer good training for my major?

- **Please do your own research**
- SEP coordinators
- Your department undergraduate academic advisor

Admin Questions?

- For University-level partners, please write to IRO
- For Faculty-level partners, please refer to the Departments or FASS



Key Questions to Answer

How to increase your chances to go on SEP?

Consider non-traditional locations such as China, European countries outside of the UK.

Be proficient in the language of the country where your university is located. How to do that?

Enrolled in the IRO French and German Language Preparation Programme (LPP)

Note: Students who wish to go to non-English speaking countries should have the relevant language proficiency.

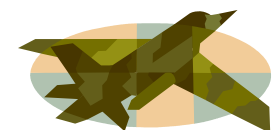


Key Questions to Answer

What type of modules can you read on SEP?

- Major modules*
- UEs
- Breadths
- GEMS
- Modules towards your minor

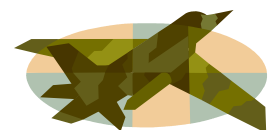
***caveat: 2nd degree/major in business**



Key Questions to Answer

Criteria for credit recognition:

- a. Must pass module and credits earned from PU
- b. Must be of certain academic rigor (credits given for orientation-related events NOT included)
- c. Must be approved by the SEP coordinator from the relevant discipline
- d. Minor only 8 MC overseas credit



Key Questions to Answer

Applying online in OPAS

- How does Overseas Programme Application System (OPAS) work?
- Is there a list of available spaces in partner universities?
- What are the sort of information I need to provide in OPAS?

Application and Selection Process

How does Overseas Programme Application System (OPAS) work?

<https://aces01.nus.edu.sg/VOPSEP/Login>

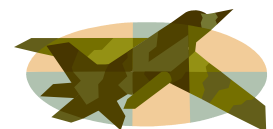
Timeline: 22 September to 13 October 2012

Period for Exchange:

- Semester 1, AY2013/14 or
- Semester 2, AY2013/14 or
- Full year, AY2013/14

Final/ graduating semester exchange not allowed.

Cannot go on exchange in Honours year !!!!



How to apply for Joint Minor?

- ❖ Must email to FASS study abroad to indicate interest
- ❖ Apply during Round 1 FASS SEP application via OPAS in late Sept 2012
- ❖ This round for exchange in both semester 1 and 2 of AY2013/2014
- Indicate UoT as first partner university choice
- Indicate your interest and reasons for applying to this joint minor in your personal statement

Application and Selection Process

- List of available spaces in partner universities (accurate as at 14 September 2012)
- May have several rounds of internal offer starting from mid Nov 2012 to end Dec 2012



Application and Selection Process

Item needed in OPAS

1. Need to state family income, saving amount, number of people in your household, how you intend to fund your exchange
2. Need a proper SEP statement
3. Need to indicate language proficiency
4. Need a complete study plan
5. Need to put 'NA' if the section is not applicable to you

Incomplete application will NOT be considered

Key Questions to Answer

Selection of Applicants

- What is the selection process like and how long does it take?
- How does the internal offer in OPAS work and what is the collection of documents process and what documents will I need?
- What happens after I submit the documents to the Dean's Office?
- How long does it take for the PU to respond? What happens at the PU processing?
- Is there an appeal system or waiting list?
- If after acceptance, I need to withdraw from SEP, what should I do?

Application and Selection Process

- Departments' first selection
- Faculty's second selection
- Email to students with internal offer
- **This process can take the greater part of one month**
- Why so long?
 - There are over 700 to 800 applications a year and they all have to be looked at.
 - Because the Departments and Faculty need time for their recommendations
 - Because the Faculty try to give alternatives when all 5 options are exhausted.



Application and Selection Process

Internal Offer Email

- Documents to complete the SEP application after acceptance of Internal Offer
- Please adhere to the deadline so that processing is not delayed
- Items required to complete your SEP application

Application and Selection Process

- Acceptance of internal offer (you have 7 to 10 days to decide)
- YOU MUST GO INTO OPAS TO ACCEPT OR REJECT THE OFFER. PLEASE DO NOT DO NOTHING.
- **Caution: Think long and hard before you accept the internal offer; admin fee of \$300 applies if you withdraw after internal offer acceptance.**
 - Lack of modules and inability to map modules
 - Lack of financial ability



Application and Selection Process

Internal Offer Email

- Some of your common questions
 - I tried to search on the PU website but cannot find the application form, what should I do?
 - If PU asked for 2 recommendation letters on their application form, do I need to provide 4 letters?
 - How should I go about getting the bank letter? Is it the same as bank statement? Do I have to pay? Why do I need to provide this letter?

Application and Selection Process

Internal Offer Email

- Some of your common questions
 - If my sponsoring organisation is already sponsoring me, do I still need the bank letter?
 - What if I do not have sufficient funds at this point to produce the bank letter?
 - What is a certification of enrolment?
 - How shall I get my transcript?
 - What does a copy of passport page mean?

Application and Selection Process

Internal Offer Email

- Some of your common questions
 - The partner university's application form required signature from my exchange coordinator, what should I do?
 - The partner university ask for a study plan/ course selection/ registration form. Do I need to get module mapping from the SEP coordinators at this point ?
 - If the PU asked me to send the documents to them directly on their website, should I do so?

Application and Selection Process

Internal Offer Email

- Some of your common questions
 - Do I need to produce proficiency of English for the partner university?
 - If the partner university requires a medical report or X-ray, do I have to include this in my application materials?

Application and Selection Process

- Faculty then send your SEP documents to RO
- RO process and forward to PU

Application and Selection Process

Appeals for Non-Successful Applications

- The odds of reversal is not high.
- Wait-listing may be possible but it depends on the timeline given by RO/PUs for the submission of SEP documents.

Application and Selection Process

Withdrawal Process

- Write formally to Assistant Dean c/o Study Abroad Query
- Please do not assume that withdrawal is automatic because you did not submit the relevant SEP documents
- Come start of semester, you will not be able to participate in CORS to register module as your status is “ On Student Exchange”



Key Questions to Answer

How does equivalency of MC/ credit exchange work?

Example

For Peking University, 15 credits= 20 MC so therefore if you read 17 credits= 23 MCs.

You can read more credits if you want, you get to bring back more MCs.

If you read less, you will also bring back less MC – no ifs and buts about this rule. If you end up with 1 MC less and you need to graduate, then you will need to do special term or another semester for 1 MC to graduate.

Reality Check Here

- Limited spaces for US, Canada, UK, Australia, New Zealand, Japan and Hong Kong
- CAP still rules
- A lot of students disappointed
- Choose wisely



List of Faculty Partner Universities

Chinese Universities

- Fudan University
- Shanghai Jiao Tong University

US Universities

- University of Washington, the Henry M. Jackson School of International Studies

European Universities

- Sciences Po Bordeaux
- Ernst Moritz Arndt University of Greifswald
- Georg-August University of Gottingen
- Leiden University College The Hague

List of Faculty Partner Universities

SEA Universities

- Khon Kaen University
- Vietnam National University, Hanoi
- Vietnam National University, Ho Chi Minh City
- Ateneo de Manila University, School of Humanities and School of Social Sciences

Fudan University, College of Foreign Languages and Literature

- Fudan University is ranked 3rd among the top 20 universities in China
- College of Foreign Languages and Literature is one of the pioneer faculties in Fudan University
- Offers various language and literature courses:
 - Russian language and literature
 - Japanese language and literature
 - German language and literature
 - French language and literature
 - English language and literature and so forth
- Offers translation courses
- Open to all FASS majors



Shanghai Jiao Tong University

- Ranked 7th among the top 20 universities in China
- One of the oldest universities in China but with beautiful campuses and modern facilities
- School of Foreign Languages
- School of Humanities
- School of International and Public Affairs
- School of Media and Design
- Open to all FASS majors



Shanghai Jiao Tong University - School of Foreign Languages



- Boasts a contingent of high calibre teaching and research faculty working in English, Japanese, German departments and College English Divisions
- Comprises a number of educational, research and professional training units: Natural Language Processing Institute, the International Testing Centre, Language Laboratories Centre, Journal of Contemporary Foreign Languages Studies, Canadian Studies Centre, Centre for Translation Studies and Lexicography



Shanghai Jiao Tong University - School of Humanities



- Department of Chinese Language and Literature
- Department of History
- Department of Philosophy
- Department of History and Philosophy of Science
- Art Education Center
- National Cultural Quality Education Base for College Students



Shanghai Jiao Tong University - School of International and Public Affairs



- Founded in June 2003: One of the important strategies for social sciences development at Shanghai Jiao Tong University
- Involves Political Science and Public Administration as the First-class Discipline of China
- Teaching and research at the school include political theory, comparative politics, international relations, public administration, public policy, social welfare, public economics, etc



Shanghai Jiao Tong University
School of International and Public Affairs



Shanghai Jiao Tong University - School of Media and Design

- Founded in September 2002
- Features its teaching as interaction of arts and science, interdependence of theory and practice, interconnection of technology, academic research and arts, internationalization, digitization and integration of Industry-University-Research
- Orients itself toward setting up cluster of disciplines where journalism and communication, arts and management interact and complement each other



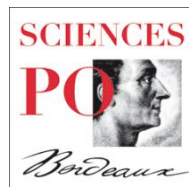
University of Washington, the Henry M. Jackson School of International Studies

- The University of Washington (UW) in Seattle is one of the oldest state-supported institutions of higher education on the Pacific coast
- The Henry M. Jackson School of International Studies combines the social sciences, humanities, and professional fields to enhance understanding of the interconnected globe
- 13 academic programmes and 14 centres that are affiliated with the school
- Currently open to all FASS majors interested in courses offered by the Jackson School



Sciences Po Bordeaux

- One of nine Institutes of Political Studies in France
- Suitable for Political Science majors
- Offers English courses in Political Science and International Relations both at undergraduate and graduate level
- Students with good French proficiency may attend courses taught in French
- Requires students to follow French language courses (beginners to advanced level)



Ernst Moritz Arndt University of Greifswald

- Founded in 1456 and is one of the oldest academic institutions in Europe
- Most modules are in German although post-graduate modules are sometime in English
- Faculty of Law and Economics
- Faculty of Philosophy
- Open to all FASS majors with German proficiency



Ernst Moritz Arndt
Universität Greifswald



Georg-August University of Göttingen

- Distinguished by the rich diversity of its subject spectrum particularly in the humanities
- Modules are mostly taught in German with limited modules in English
- Faculty of Humanities
- Faculty of Social Sciences
- Open to all FASS majors with German proficiency

GEORG-AUGUST-UNIVERSITÄT
GÖTTINGEN



Leiden University College The Hague

- International honours college of Leiden University situated in the world's capital of peace and justice
- Provides unique combination of world-class scholarly depth, drawn from the oldest university in the Netherlands, with a cutting-edge and globally conscious curriculum that capitalises on its location in the vibrant, international atmosphere of The Hague
- Offers courses in Liberal Arts & Sciences that focus on issues of Peace, Justice and Sustainability
- Open to all FASS majors



Khon Kaen University



- The first higher educational institution in the Northeastern Region of Thailand
- Faculty of Humanities and Social Sciences
- Open to all FASS majors
- Southeast Asian Studies majors must completed at least 2 levels of Thai language modules before embarking on the exchange
- For non-SEA majors: Documentation of Thai language proficiency before you will be offered an exchange
- Students can only go in Sem 1 of any given AY

Vietnam National University, Hanoi



- Vietnam National University, Hanoi (VNU) is the first modern university ever established and one of the two national universities in Vietnam
- Open to all FASS majors
- Southeast Asian Studies majors must complete at least 2 levels of Vietnamese language modules before embarking on the exchange
- Non-SEA majors:, Require documentation of Vietnamese language proficiency before you will be offered an exchange
- Students can only go in Sem 1 of any given AY



VIET NAM NATIONAL UNIVERSITY, HANOI
144 Xuan Thuy Street , Cau Giay Distric, Hanoi, Vietnam

Vietnam National University, Ho Chi Minh City



- The largest and most distinguished university in Vietnam
- Open to all FASS majors
- Southeast Asian Studies majors must complete at least 2 levels of Vietnamese language modules before embarking on the exchange
- Non-SEA majors:, Require documentation of Vietnamese language proficiency before you will be offered an exchange
- Students can only go in Sem 1 of any given AY



Ateneo de Manila University, School of Humanities and School of Social Sciences

- As a University, the Ateneo de Manila seeks to preserve, extend, and communicate truth and apply it to human development and the preservation of the environment
- Courses offered range from Chinese Studies, Economics to Psychology, Communication etc
- Open to all FASS majors



ATENEODEMANILA UNIVERSITY



Questions?

