

TOSHIBA

Corporate Profile Data

(Financial and Stock Data, as of March 31, 2018)

Company Name	: TOSHIBA CORPORATION
Headquarters Address	: 1-1, Shibaura 1-chome, Minato-ku, Tokyo, Japan
Founded	: July 1875
Chairman and CEO	: Nobuaki Kurumatani
President and COO	: Satoshi Tsunakawa
Common Stock	: ¥499,999 million
Net Sales	: ¥3,947.6 billion (FY2017)
Fiscal Year	: April 1 to March 31
Number of Employees	: 141,256
Number of Shares issued	: 6,520.7 million shares
Number of Shareholders	: 300,871
Stock Exchange Listings	: Japan : Tokyo and Nagoya

Note: Common Stock is to be ¥200,000 million as of July 31, 2018.

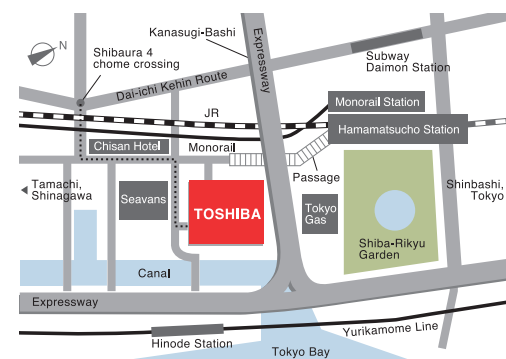


TOSHIBA

1-1, Shibaura 1-chome, Minato-ku, Tokyo 105-8001, Japan

Tel +81-3-3457-2191

<http://www.toshiba.co.jp/saiyou/international/>



BUILD YOUR CAREER 

JAPAN

TOSHIBA JAPAN RECRUITMENT

Corporate History

■ World's First and Japan's First Products

Toshiba has released numerous World's First and Japan's First products and services since its establishment in 1875. The tireless curiosity and passion for innovation of Toshiba's two founders are the source of Toshiba's corporate DNA. We continue to draw inspiration from their example and resolve to meet customers' need with advanced technologies.

1875

Hisashige Tanaka opened a telegraph equipment factory in Shimbashi, Tokyo



Tanaka Seizo-sho

1904

Shibaura Engineering Works Co., Ltd. established



Shibaura Engineering Works Co., Ltd

1967 ■

Completed world's first mail processing equipment



Tokyo Shibaura Electric Co., Ltd

Hakunetsu-sha

Tokyo Electric Company

1890

Ichisuke Fujioka established Hakunetsu-sha & Co., Ltd. in Kyobashi, Tokyo



1955 ■

Released Japan's first electric rice cooker



1985

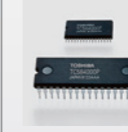
Adapted "Toshiba Corporation" as the official name.



TOSHIBA

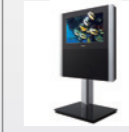
1991 ■

Developed world's first 4Mbit NAND-type electrically erasable and programmable read-only memory (EEPROM)



2010 ■

Commercialized world's first 3D LCD TVs not requiring dedicated glasses



2014

Started vegetable production at Toshiba Clean Room Farm



1985 ■

Released world's first laptop PC



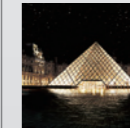
2004

Joined the United Nations Global Compact



2011

LED lighting installed in the Louvre Museum in Paris



Business Domains

Toshiba group is a diversified electric/electronic manufacturer and provides a wide range of products and services on a global basis in four business domains: Energy, Social Infrastructure, Electronic Devices and Digital Solutions.

Energy Business Domain

Creating Sustainable Societies

Toshiba Group contribute to build energy infrastructure that enriches quality of life for people throughout the world. In order to ensure stable supply of electricity, we offer multiple types of solutions in power generation facility. We are also a leading supplier of power transmission and distribution systems; rechargeable batteries for efficient storage of energy; and hydrogen-based autonomous energy supply systems utilizing renewable energy and hydrogen.



Main products & services As of March 31, 2017

- Nuclear / Thermal / Hydroelectric Power Generations Systems
- Transmission & Distribution Systems / Solar Photovoltaic Systems

Social Infrastructure Business Domain

To Realize a Sustainable Society with Safety, Security and Reliability

Toshiba Group aims to realize a sustainable society that is safe, secure and reliable through our solutions for Public Infrastructure, Building & Facilities and Transportation and Industrial Systems all over the world. We offer public infrastructure solutions for water supply and sewerage, highways, disaster prevention, broadcasting, telecommunications, security and automation; and energy-saving, eco-friendly building solutions for elevators & escalators, air-conditioners, and lighting. For Transportation and Industrial Systems, we offer high value-added systems and solutions for railways, motors & inverters, rechargeable batteries and automotive devices.



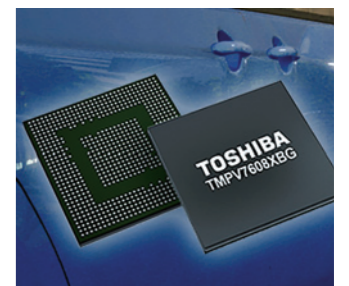
Main products & services As of March 31, 2017

- Public Infrastructure: Broadcasting, Water Treatment, Highway, Central Server Systems
- Building & Facilities: Elevators & Escalators; Commercial Air Conditioners; Lighting
- Railway & Industrial Systems: Railway, Battery Systems; Industrial / Automotive Motors

Electronic Devices Business Domain

Electronic Devices that are Shaping our Future

Toshiba Group promotes advances in electronic devices that help everyone to live more comfortably and safely. In the discrete semiconductor business, we focus on the power devices that control equipment power consumption. Our system LSI business offers ICs for IoT, automotive, communications and power supply applications. In the HDD business, we lead the way in large capacity enterprise HDDs for data centers and servers. In the era of big data, you either sink or swim in the sea of information. In fact, state-of-the-art electronics are contributing more than ever, from cutting energy consumption to the control and operation of automobiles.



Main products & services As of March 31, 2017

- Storage Products (HDD)
- MOSFETs
- Small Signal Devices
- Optoelectronic Devices
- Logic LSIs
- Mixed Signal ICs
- Power Devices
- Image Sensors

Digital Solutions Business Domain

Lead Digital Transformation and Co-create New Value Propositions in Global Society

Toshiba Group takes full advantage of know-how cultivated in over 140 years of experience in the social infrastructure business and manufacturing, and of expertise gained from a wide range of industries and worksites. We combine these with our latest advances in IoT and AI, and co-create new value propositions with our customers and society. We will continue to contribute to creating a comfortable and safer society for people worldwide, to apply our latest digital technologies to business transformations, and to promote Co-Creation that enables open innovations that extend far beyond the boundaries of companies, industries and regions.

Main products & services As of March 31, 2017

- TOSHIBA Communication AI RECAIUS™
- TOSHIBA Analytics AI SATLYS™
- TOSHIBA IoT Architecture SPINEXTM™



Objectives

Expand overseas business

Increase competitiveness in global markets

Develop a diversified global headquarter

Toshiba recruits highly capable new graduates with bachelor's degree or higher who are willing to work and develop a long-term career in Japan. Here are our three main objectives to hire talents outside Japan and we welcome applicants who are able to help us achieve these objectives.

What we offer...

For employees who are hired via Toshiba Japan Recruitment, Toshiba supports his/her entry into Japan with a smooth start of a new life in Toshiba. We also provide continuous training program to cultivate our employees in a long-term point of view.

Comprehensive Training Programs for Global Employees

- Japanese Language
- Business Manners
- Cross-culture Team-building
- Corporate Philosophy & Management Vision
- Basic Business Skills in Japan
- Management Innovation
- Corporate Entry Program, etc...

Toshiba provides a comprehensive training package that ranges over such topics as Japanese communication skills, business manners, technological knowledge, corporate philosophy, and so on. Our Training System is expressly designed to build proficiency and to realize the full potential of each employee through in-depth training in essential areas.

Company Housing

◆ Company Apartment for Families

For employees who have immediate families residing in Japan, Toshiba will assist them find a property to let and the rent will be partly covered by the company.

◆ Dormitory for Single Employee

Company dormitories located near the working place are available to single employees at reasonable rates. The studio type of room is air-conditioned and furnished with a bed, a unit bath, a closet, a desk and a chair.



Meet Our People in Japan



Researcher
Corporate Research & Development Center

Ho, Yinghao (Taiwan)

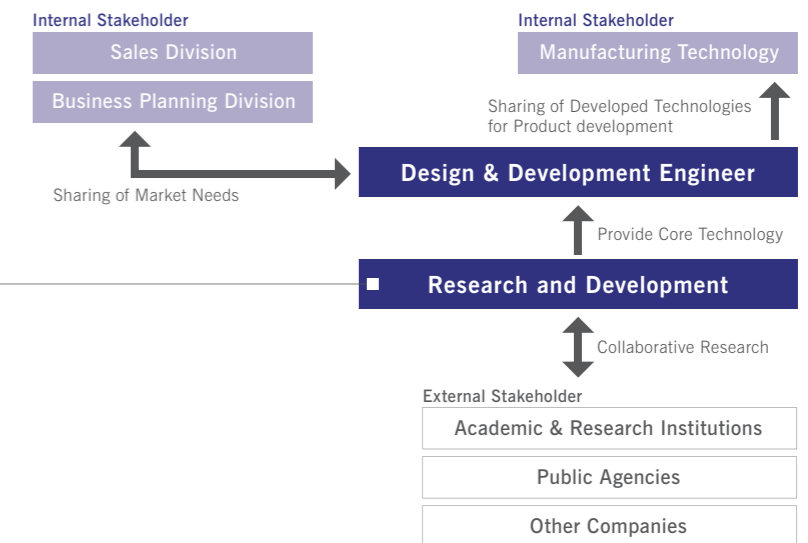
Majored in Materials Science & Engineering

I am responsible for researching the nonvolatile crossbar array FPGA, from device level to the whole system. Everyone in my team is responsible for different stages of the research, which allows us to individually arrange research schedules and conduct a meeting session every week to provide updates of our observations.

REMARKABLE R&D CAPABILITIES

The technical capabilities in Toshiba is excellent and my co-workers not only focus on the research we currently engage in, but also pays attention to bringing changes to the world. Therefore, it is very important for us to carefully listen to customers' voice and adjust the direction of our research.

The current goal for us is to build up the high-density nonvolatile FPGA. It is exciting to be able to work with professional research team toward this goal and work on the development of next-generation technologies at Toshiba.



My main responsibility is to manage the entire railway vehicle engineering project from the bidding to warranty stage. It is important to fully understand the requirements of our customers and to well lead the design engineering team in order to meet the contractual obligations.

COMPLETE WELFARE SYSTEM

I am a career-oriented working mother. I have received full support from Toshiba's welfare system during my maternity. After resuming my work, I found there are many challenges in balancing my work and childcare, especially in unexpected emergencies of family service. However, the flexibility to use the shorter shift system and take sudden leaves helps me a lot in managing my family responsibility. There are also other working mothers in my department that we can share our experience with each other. With such cooperative working environment and the maternity benefits provided, I am able to manage my time with family and doing housework throughout the week.



System Engineer
Railway Vehicle Systems
Engineering Department

Yui Kanazawa (Japan)

Majored in Communication Engineering

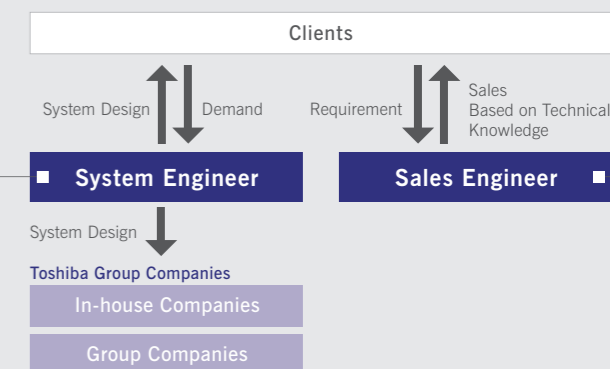


System Engineer
Energy Systems & Solutions Company

Jan Michael San Perez (Philippines)

Majored in Mechanical Engineering

I am in the Project Planning and Development Group in the Thermal Power Plant Project Engineering Department. The responsibilities of our department consist of planning, engineering and tendering for steam turbine equipment for domestic and international thermal power plants.



Sales Engineer

VS.

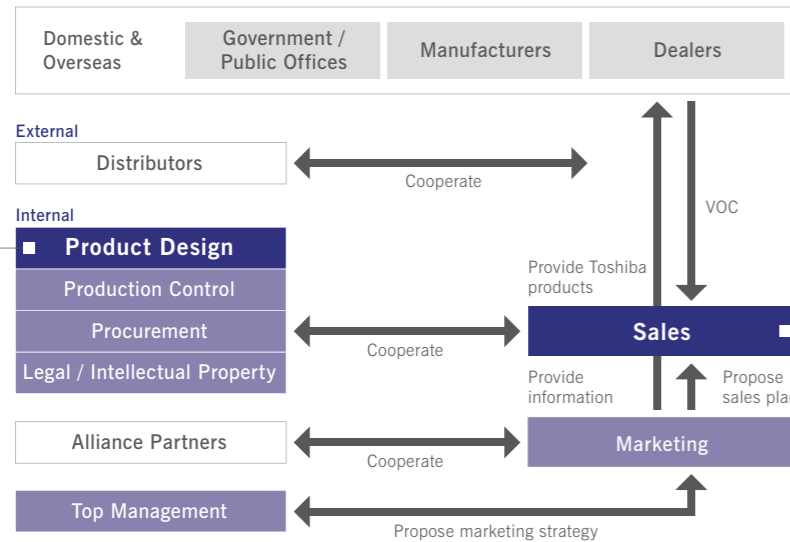
System Engineer

Sale engineers serve as the bridge between internal design teams and external clients. We provide a technical point of view to support business strategies. Our clients are mainly from Japan. That's why Japanese-based communication and an understanding of Japanese business culture are necessary to this job. As a foreign employee, I didn't know how to do business with Japanese people in the beginning. However, little by little, I have accumulated knowledge and experience, and gained confidence from my daily work. It's an exciting process of personal growth.



The job of system engineer involves technical negotiation with customers plus coordination with internal sales, engineering, design and cost estimation teams.

My work requires not only heavy technical studies but also project management and cost estimations. And all of these have to be done in a short time frame. This means that I find efficient time management, team-building and good communication to be very important in order to perform well at work.



Sales & Marketing Professional
Storage Products Sales & Marketing Division

■ **Heng, Tse Kai (Singapore)**

Majored in Electrical Engineering

The Toshiba Commitment

Committed to people, Committed to the Future. TOSHIBA

Basic Commitment of the Toshiba Group

We, the Toshiba Group companies, based on our total commitment to people and to the future, are determined to help create a higher quality of life for all people, and to do our part to help ensure that progress continues within the world community.

Commitment to People

We endeavor to serve the needs of all people, especially our customers, shareholders, and employees, by implementing forward-looking corporate strategies while carrying out responsible and responsive business activities. As good corporate citizens, we actively contribute to further the goals of society.

Commitment to the Future

By continually developing innovative technologies centering on the fields of Electronics and Energy, we strive to create products and services that enhance human life, and which lead to a thriving, healthy society. We constantly seek new approaches that help realize the goals of the world community, including ways to improve the global environment.

Recruitment Process



Message From The Recruiting Center

As globalization transforming the market, it is also encouraging the emergence of different needs in different regions. Toshiba believes that the way to respond is to embody diversity; that being diversified allows us to stand out in the market as an even stronger contender, and will support us in fostering continuous company. In our international business, we emphasize good relations with people and regions around the world, resting on a deep understanding of local cultures and concerns.

In keeping with this approach, we encourage talented people from outside Japan to join Toshiba and to share your innate understanding of your countries with us. As you bring your own ideas to us, you will also learn and benefit from exposure to Japanese culture and discover values of other foreign recruits. Above all, we are looking for people who have a bold, challenging spirit and a passion for realizing their dreams. They are the kind of go-getters that Toshiba wants. We understand people are at their best when they are doing something they are interested in doing, and our recruiting center prioritizes seeking the best way to match your

individual goals and interests with our corporate strategy. In a span of 10 to 20 years, what do you want to do and what can you do? What kind of role could you and will you play as Toshiba advances into the future? Will you be happy and will you feel worthwhile working with Toshiba? These are questions that we will help you to answer when you decide to apply for a job at Toshiba.



Members of Toshiba Recruiting Center



Product Designer
Design Center

■ **Margaux Hernequet (France)**

Majored in Product Design

When I was a student, I had two long-term internships with Toshiba. The company amazed me with its innovative design approach and work environment. I also realized the value I can offer from my perspective as a foreigner. These are the reasons I joined Toshiba. I am now working in the Medical & Healthcare Design Group, which develops medical imaging devices for domestic and overseas market. My work consists of reducing patient and technician stress during examinations by developing the better ergonomics and user experience that new medical technologies require.

COMPREHENSIVE TRAINING PROGRAMS

Toshiba differentiates itself with a comprehensive, deep immersion training program for its new employees that helps them to blend in the company universe. I really appreciated experiencing this unique recruitment program. Up till now I have had Japanese language training adapted to my level; Corporate Entry training, where I learned about Toshiba's philosophy and built a network with all the other new employees; and factory and sales training that brought me different perspectives about product design. Though working in Japan is challenging due to a different working culture from your own country, the training programs indeed have equipped me well for my journey with Toshiba.

I've been working with Toshiba for eight years. I have experience in R&D for TV and next generation image processing and display technologies, but now, I'm working in sales and marketing of storage products in Asia.

Though I joined Toshiba as a researcher, I've always had an interest in overseas marketing. Toshiba's training program gave me the opportunity to switch my career track from technical to business.

MULTIPLE CAREER OPPORTUNITY

Toshiba has a rich career design system that allows individuals to design their career. The system includes an annual career design interview, an internal job posting system that employees are eligible for after 3-years work experience, and trainings that helps to broaden capabilities and bring career opportunities.

Take me for example. My career switch exploits my full potential; I make use of my technical background and language ability as a bridge between overseas companies and customers with Japan HQ. I intend to fulfill my current responsibilities while gaining a deeper understanding of business operation and developing a well-rounded skill set that will make me a good management candidate in the future.



Sales Engineer
Infrastructure Systems & Solutions Company

■ **Gai, Na (China)**

Majored in Social Intelligence and Informatics

My team belongs to the Railway Vehicle Systems Engineering Department. We engineer the electrical equipment for railways, including the propulsion system, auxiliary power supply system, train information system and train air-conditioning system.



As an engineer in different business segments, Ms. Gai and Mr. Perez also took this chance to share their own experience with each other during the interview.